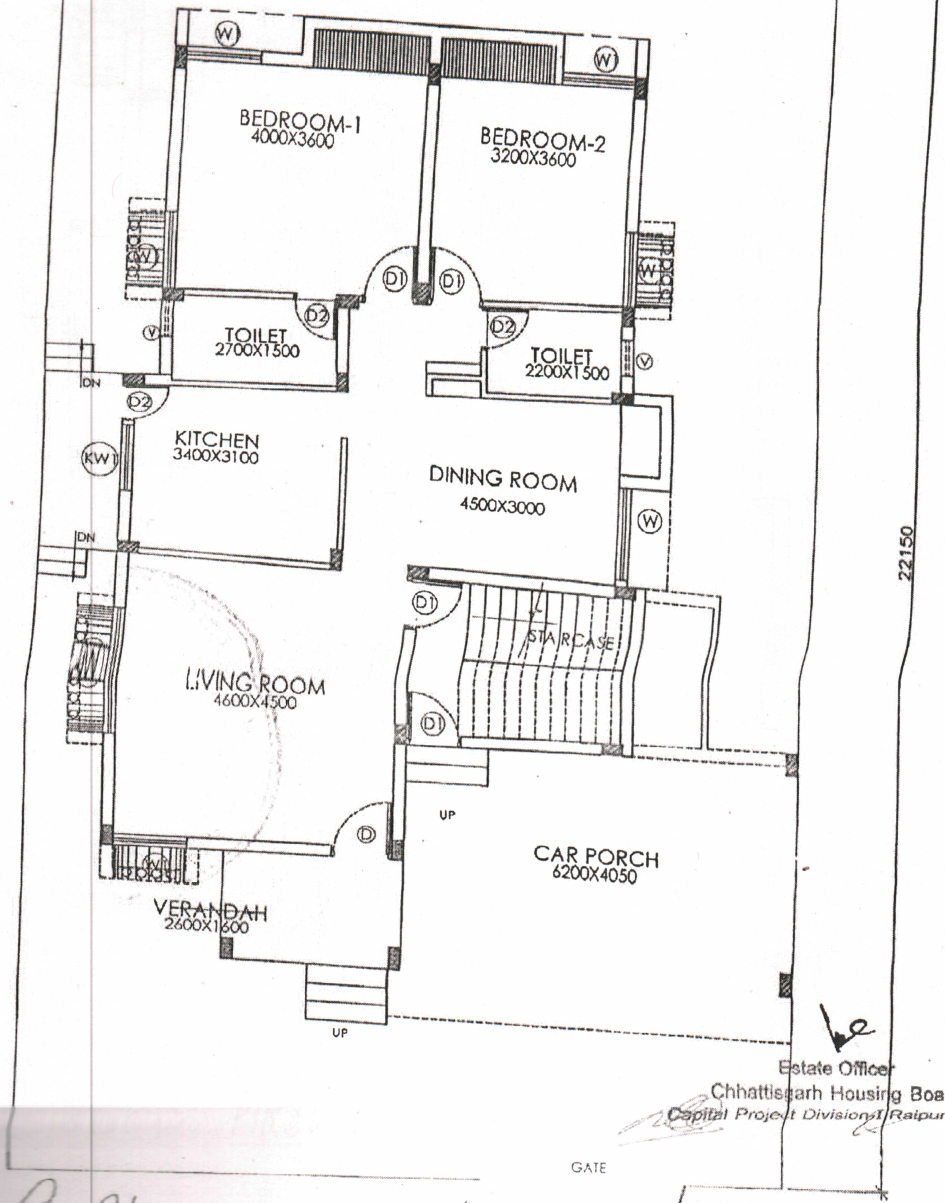


23

PLAN - P3C



Estate Officer
 Chhattisgarh Housing Board
 Capital Project Division Raipur (C.G.)

[Signature]
 SUB-ENGINEER
 CG HOUSING BOARD
 CAPITAL PROJECT DIVISION
 RAIPUR

[Signature]
 ASSISTANT ENGINEER
 CG HOUSING BOARD
 CAPITAL PROJECT DIVISION
 RAIPUR

[Signature]
 EXECUTIVE ENGINEER
 CG HOUSING BOARD
 CAPITAL PROJECT DIVISION
 RAIPUR